

SSS-Grand-Saint-Bernard-43(50ul)



Oil Pattern Distance: 43 Feet **Reverse Brush Drop:** 43 Feet **Oil Per Board:** 50 uL
Forward Oil Total: 14.4 mL **Reverse Oil Total:** 10.5 mL **Volume Oil Total:** 24.9 mL
Forward Boards Crossed: 288 Boards **Reverse Boards Crossed:** 210 Boards **Total Boards Crossed:** 498 Boards

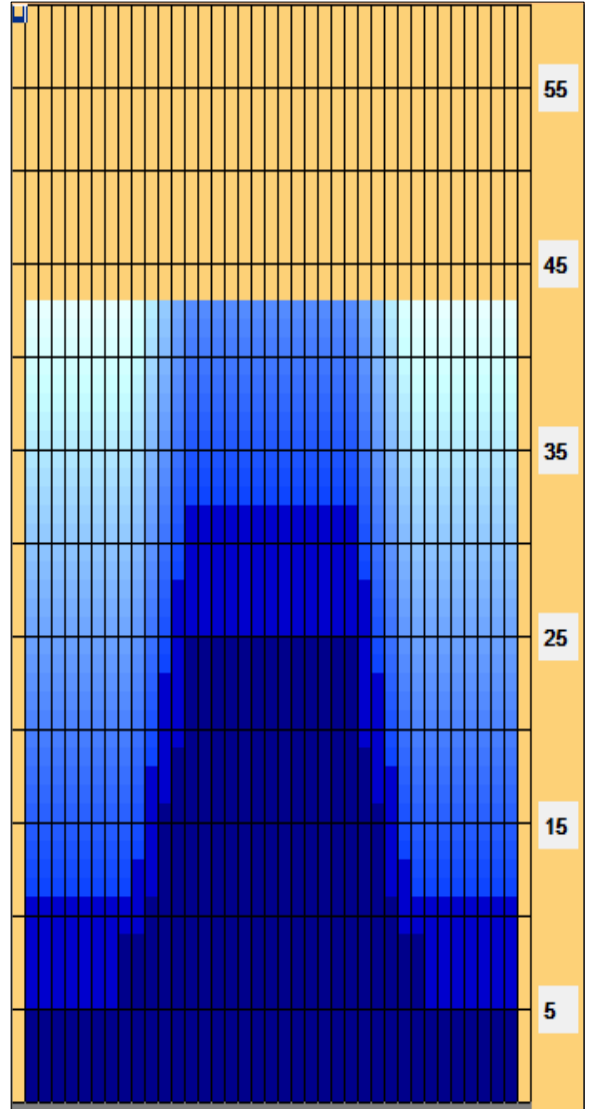
	Start	Stop	Loads	Speed	Crossed	Start	End	Feet	T.Oil
1	2L	2R	4	14	148	0.0	5.9	5.9	7400
2	9L	9R	2	14	46	5.9	9.8	3.9	2300
3	11L	11R	1	14	19	9.8	11.7	1.9	950
4	12L	12R	2	18	34	11.7	16.8	5.1	1700
5	13L	13R	1	18	15	16.8	19.3	2.5	750
6	14L	14R	2	22	26	19.3	25.5	6.2	1300
7	2L	2R	0	22	0	25.5	33.0	7.5	0
8	2L	2R	0	26	0	33.0	43.0	10.0	0

	Start	Stop	Loads	Speed	Crossed	Start	End	Feet	T.Oil
1	2L	2R	0	30	0	43.0	32.0	-11.0	0
2	14L	14R	1	26	13	32.0	28.4	-3.6	650
3	13L	13R	2	18	30	28.4	23.3	-5.1	1500
4	12L	12R	2	18	34	23.3	18.2	-5.1	1700
5	11L	11R	2	18	38	18.2	13.1	-5.1	1900
6	10L	10R	1	14	21	13.1	11.2	-1.9	1050
7	2L	2R	2	14	74	11.2	7.3	-3.9	3700
8	2L	2R	0	10	0	7.3	0.0	-7.3	0

Conditioner:
 Type In or Select
 One

 TransferType:
 Type In or Select
 One

- Forward
- Reverse
- Combined
- Buff



Item	3L-7L:18L-18R	8L-12L:18L-18R	13L-17L:18L-18R	18L-18R:17R-13R	18L-18R:12R-8R	18L-18R:7R-3R
Description	Outside Track:Middle	Middle Track:Middle	Inside Track:Middle	Middle: Inside Track	Middle:Middle Track	Middle:Outside Track
Track Zone Ratio	3.67	2.16	1.03	1.03	2.16	3.67

